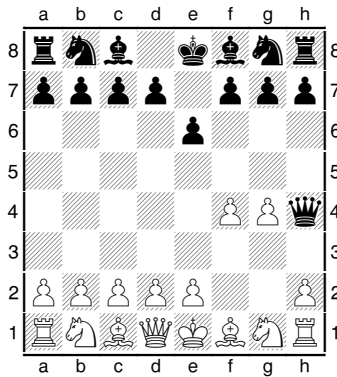


The Shortest Win:

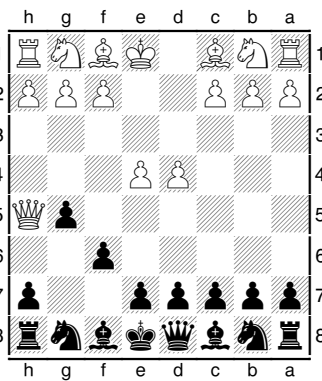
The shortest win in chess is called Fools Mate. Naturally you need to be a fool to fall into this trap. White must play two bad moves to end up lost so early.

1.f4 e6 2.g4 ♖h4#



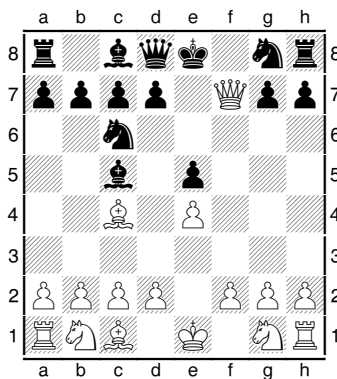
The second shortest is the same opening but Black fall in the trap.

1.e4 f6 2.d4 g5 3.♖h5#



The famous 4 move Scholar's mate.

1.e4 e5 2.♖f3 ♘c6 3.♗c4 ♗c5 4.♖xf7# Line

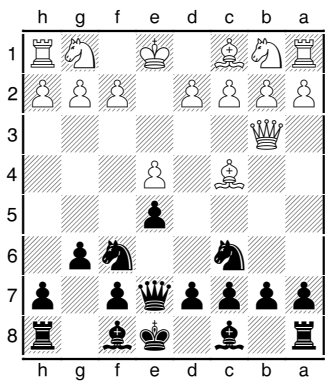


Here is the one everyone has tried at one time or another. The idea is simple use the Queen and Bishop together to attack

the weakest pawn on the board. Here is was Black who fell to mate on f7.

With proper play though Black can easily thwart the attack and get an early advantageous lead in development.

1.e4 e5 2.♖h5 Threatening the e5 pawn and aiming at f7. 2...♘c6 Guarding the e5 pawn and developing the Knight [2...♗f6? 3.♖xe5+] 3.♗c4 Threatening Scholar's mate on f7! 3...g6 Using a simple pawn to block the Queen. [3...♗f6?? 4.♖xf7# The Queen slips under the Knight and mates on f7.] 4.♖f3 Again attacking f7 and threatening mate. 4...♗f6 Giving the Knight two jobs. 1. Stop the mate. 2. Attack the center pawn on e4. [4...♗c5?? Oops! Forgot something? 5.♖xf7#] 5.♖b3 With mate out of the question White tries to steal the f7 pawn with a Bishop Queen battery. 5...♖e7 Although this squishes the Bishop on f8 it saves the pawn on f7. Black can play Bg7 on the next move and castle soon after. Leaving him with a big lead in development.



The important thing to remember in defending an attack is to find ways to defend while improving your chances to counter attack. Jobs, jobs, jobs!