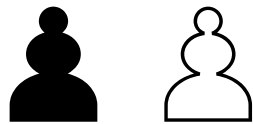


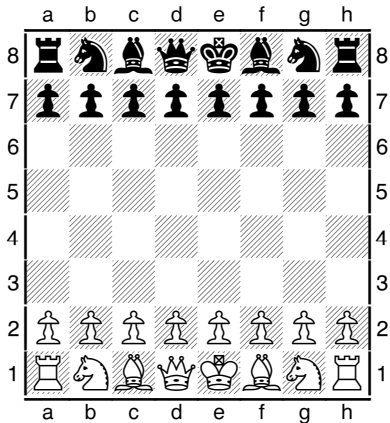
Chess Practice 101

Exercises for the Beginner



The Pawn:

The Starting Position:



This is the starting position of a typical chess game. The White Pieces on the 1st and 2nd ranks and the Black Pieces on the 7th and 8th ranks. The Queens are placed in the middle on their own color. The white Queen is on a white square and the black Queen is on a black square. Remember if there is no letters and numbers around the border then be sure there is a white square in the lower right hand corner. "White on the right is right."



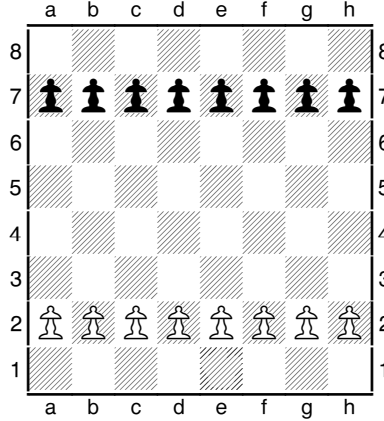
The Pawn:

The following exercises are to help you get used to moving the pawns.

"Snail Snail"

This is a game to practice moving pawns. The object is

the first side to promote a pawn wins. If neither side can promote the game is drawn.

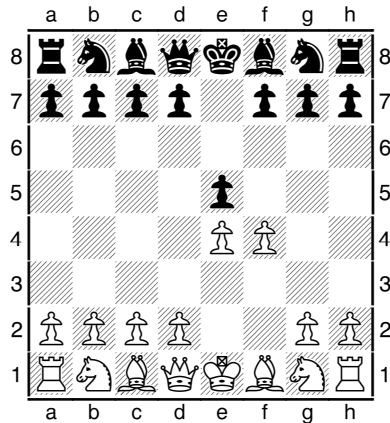


Here is the starting position for "Snail Snail."

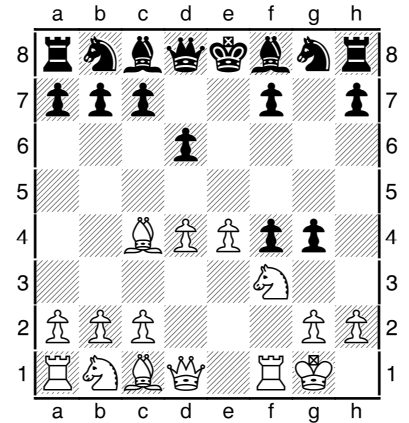
White moves first as in regular chess. All the rules of Pawns apply.

Practicing Pawn Captures:

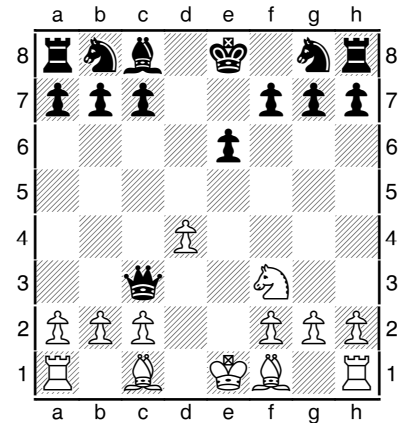
Each diagram below has a Pawn that can capture a Pawn or piece. Draw a line to show this capture. If you know how write chess notation write the move on the line below each diagram.



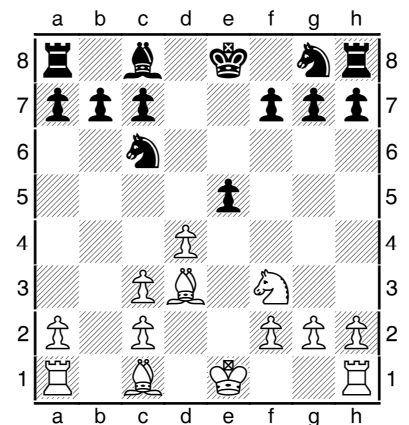
Black to move.....



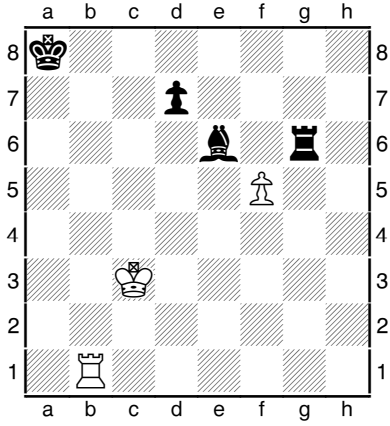
Black to move.....



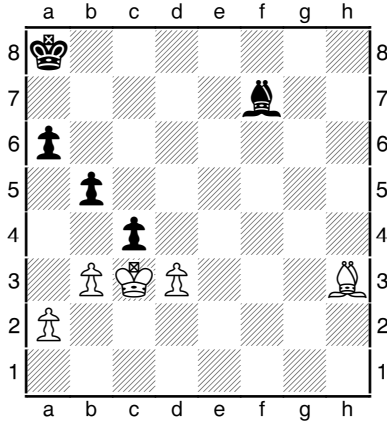
White to move.....



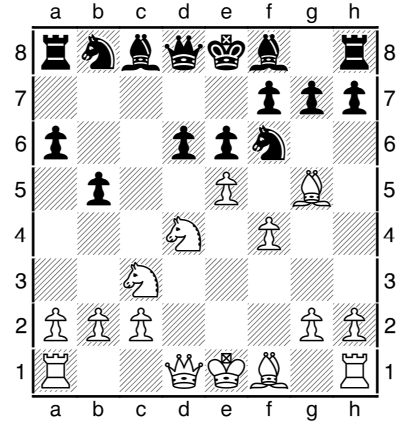
White to move.....



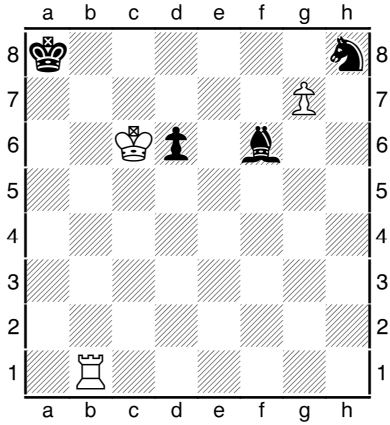
White to move..._____



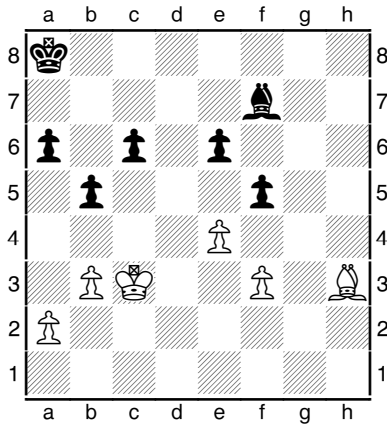
White to move..._____



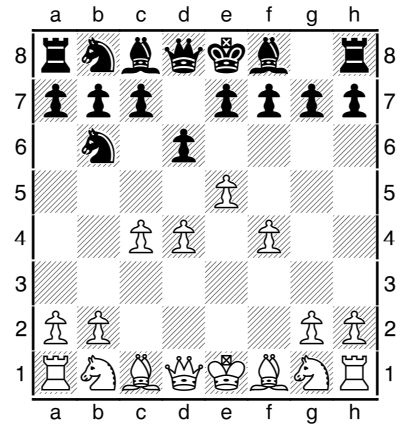
Black to move..._____



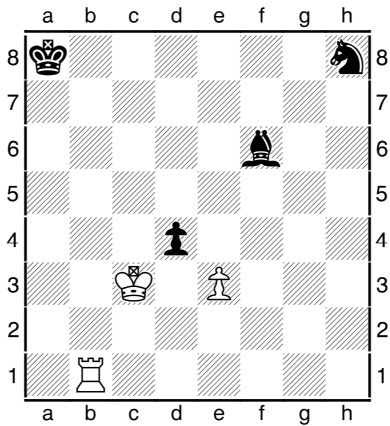
White to move..._____



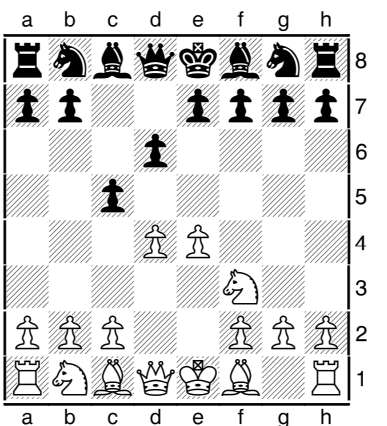
Black to move..._____



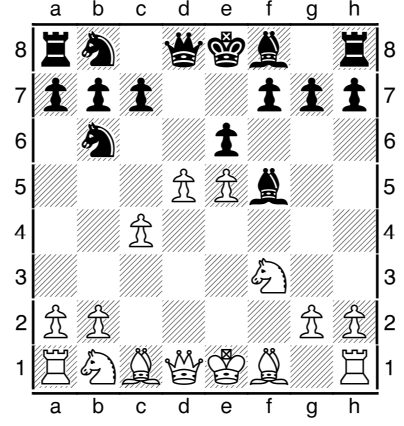
Black to move..._____



White to move..._____



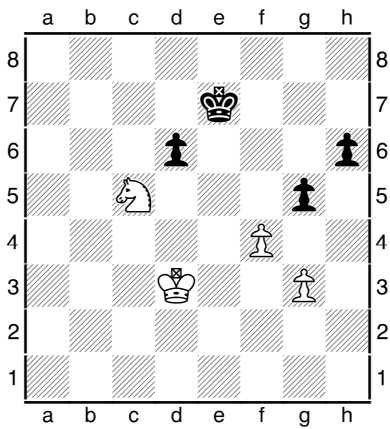
Black to move..._____



Black to move..._____

Pawn Value Practice:

Pawns, having a value of 1 can do considerable damage if they can capture a piece larger than themselves. In the following diagrams pawns have the choice of capturing several pieces. Find the pawn capture that gets the most value.

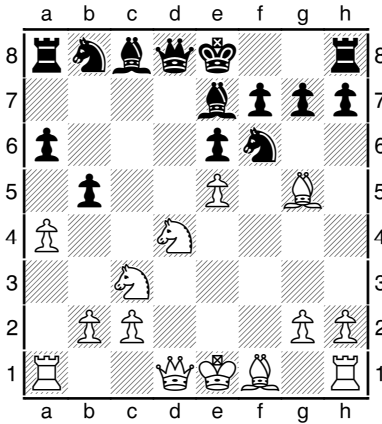


Black to move.....

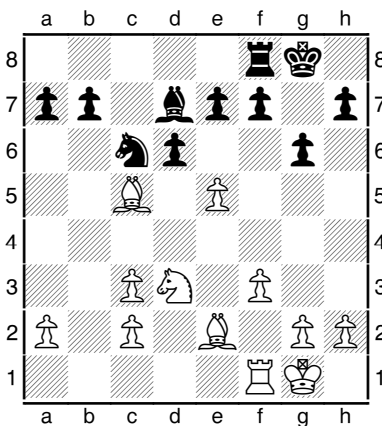
For example in the above diagram black has two choices. Take the pawn on f4 or take the Knight on c5. Naturally the Knight is worth 3 times the value of the pawn and so the correct answer is take the Knight on c5.

Find the best pawn capture in the following exercises. Draw a line to show your move or if you know how,

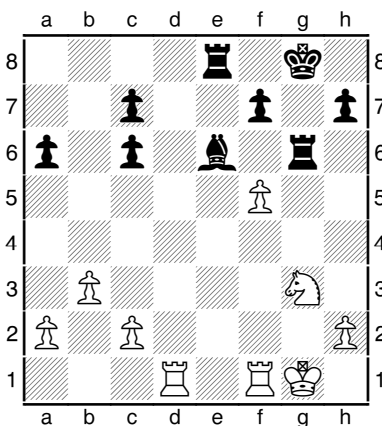
write the answer in chess notation.



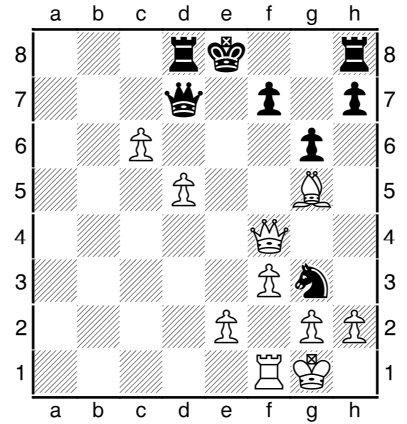
White to move.....



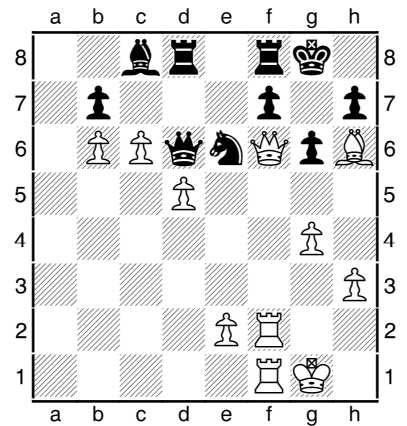
Black to move.....



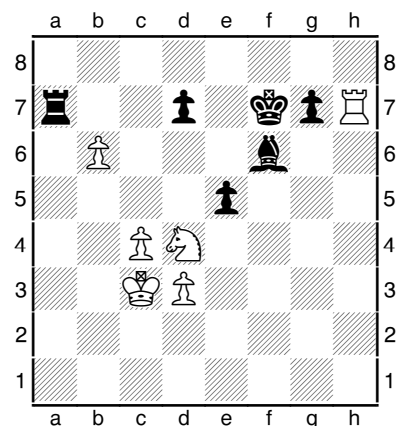
White to move.....



White to move.....



White to move.....



Black to move.....